

State of Wyoming Corner Record

(In compliance with the *CORNER PERPETUATION AND FILING ACT*, Wyoming Statutes, 1997 Section 33-29-140 et. seq., and the Rules and Regulations of the Board of Professional Engineers and Professional Land Surveyors)

Reverse side of this form may be used if more space is needed.

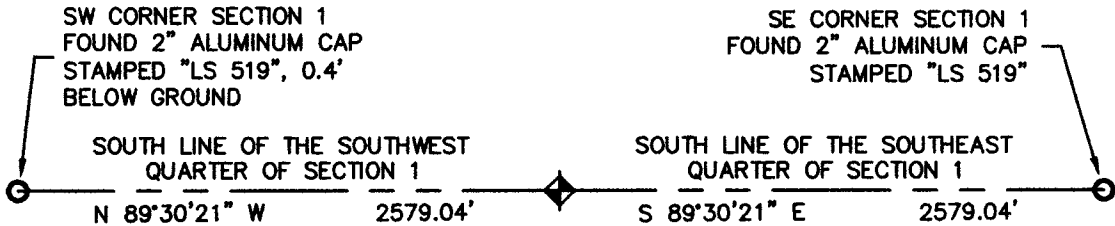
ORIGINAL RECORD: "SET GRANITE BOULDER 14"x8"x7" FOR 1/4 SEC. COR."

FOUND: NO MONUMENT OR ACCESSORIES FOUND.

SET: 30" LONG NO. 6 REBAR WITH A 3-1/4" ALUMINUM CAP STAMPED "PLS 10387", SET THREE (3) REFERENCE MONUMENTS AS SHOWN BELOW. POSITION SET BY SPLIT ALONG SOUTH LINE.

NOTE: BEARINGS AND DISTANCES HERERON ARE BASED ON UTM ZONE 13 NORTH - NAD83/NAVD88 AND ARE SHOWN AT GRID. IN ORDER TO OBTAIN GROUND DISTANCES USE A COMBINED SCALE FACTOR OF 1.00067428.

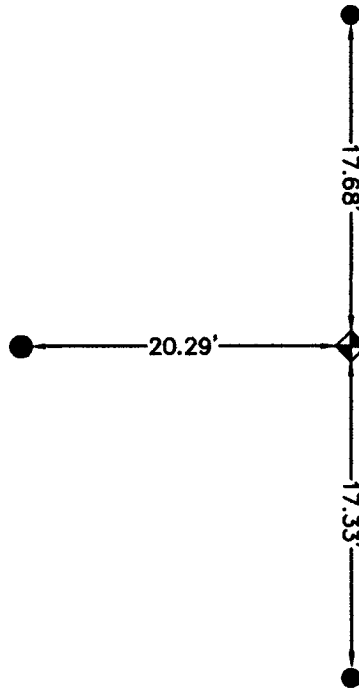
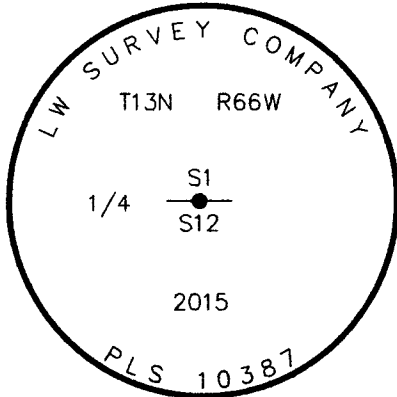
Monument Location



RECP #: 669394

RECORDED 9/11/2015 AT 11:33 AM BK# 2463 PG# 1192
Debra K. Lathrop, CLERK OF LARAMIE COUNTY, WY PAGE 1 OF 1

- = SET 18" LONG NO. 5 REBAR WITH 2" ALUMINUM CAP STAMPED "PLS 10387"
- ◆ = SOUTH QUARTER CORNER OF SECTION 1 SET 30" LONG NO. 6 REBAR WITH 3-1/4" ALUMINUM CAP STAMPED "PLS 10387"



Monument Inscription

Reference Monument Location

Date of Field Work: 07/24/2015

Office Reference: Project #50968

Cross Index Plat

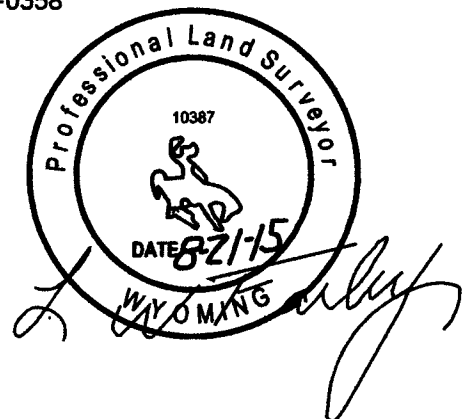
	1	2	3	4	5	6	7	8	9	10	11	12	13	14	15	16	17	18	19	20	21	22	23	24	25
A	+	+	+	+	+	+	+	+	+	+	+	+	+	+	+	+	+	+	+	+	+	+	+	+	+
B	+	+	+	+	+	+	+	+	+	+	+	+	+	+	+	+	+	+	+	+	+	+	+	+	+
C	+	6	+	5	+	+	4	+	+	3	+	+	2	+	+	1	+	+	+	+	+	+	+	+	+
D	+	+	+	+	+	+	+	+	+	+	+	+	+	+	+	+	+	+	+	+	+	+	+	+	+
E	+	+	+	+	+	+	+	+	+	+	+	+	+	+	+	+	+	+	+	+	+	+	+	+	+
F	+	+	+	+	+	+	+	+	+	+	+	+	+	+	+	+	+	+	+	+	+	+	+	+	+
G	+	+	+	+	+	+	+	+	+	+	+	+	+	+	+	+	+	+	+	+	+	+	+	+	+
H	+	7	+	8	+	+	9	+	+	10	+	+	11	+	+	12	+	+	+	+	+	+	+	+	+
J	+	+	+	+	+	+	+	+	+	+	+	+	+	+	+	+	+	+	+	+	+	+	+	+	+
K	+	+	+	+	+	+	+	+	+	+	+	+	+	+	+	+	+	+	+	+	+	+	+	+	+
L	+	+	+	+	+	+	+	+	+	+	+	+	+	+	+	+	+	+	+	+	+	+	+	+	+
M	+	18	+	17	+	+	16	+	+	15	+	+	14	+	+	13	+	+	+	+	+	+	+	+	+
N	+	+	+	+	+	+	+	+	+	+	+	+	+	+	+	+	+	+	+	+	+	+	+	+	+
O	+	+	+	+	+	+	+	+	+	+	+	+	+	+	+	+	+	+	+	+	+	+	+	+	+
P	+	+	+	+	+	+	+	+	+	+	+	+	+	+	+	+	+	+	+	+	+	+	+	+	+
Q	+	19	+	20	+	+	21	+	+	22	+	+	23	+	+	24	+	+	+	+	+	+	+	+	+
R	+	+	+	+	+	+	+	+	+	+	+	+	+	+	+	+	+	+	+	+	+	+	+	+	+
S	+	+	+	+	+	+	+	+	+	+	+	+	+	+	+	+	+	+	+	+	+	+	+	+	+
T	+	+	+	+	+	+	+	+	+	+	+	+	+	+	+	+	+	+	+	+	+	+	+	+	+
U	+	+	+	+	+	+	+	+	+	+	+	+	+	+	+	+	+	+	+	+	+	+	+	+	+
V	+	+	+	+	+	+	+	+	+	+	+	+	+	+	+	+	+	+	+	+	+	+	+	+	+
W	+	+	+	+	+	+	+	+	+	+	+	+	+	+	+	+	+	+	+	+	+	+	+	+	+
X	+	+	+	+	+	+	+	+	+	+	+	+	+	+	+	+	+	+	+	+	+	+	+	+	+
Y	+	+	+	+	+	+	+	+	+	+	+	+	+	+	+	+	+	+	+	+	+	+	+	+	+
Z	+	+	+	+	+	+	+	+	+	+	+	+	+	+	+	+	+	+	+	+	+	+	+	+	+
	1	2	3	4	5	6	7	8	9	10	11	12	13	14	15	16	17	18	19	20	21	22	23	24	25

Firm/Agency, Address

LeRoy W. Farley, PLS 10387
LW Survey Co.
12345 W. Alameda Parkway
Suite 205
Lakewood, CO 80228
Telephone Number: (303) 658-0358

This corner record was prepared by me or under my direction and supervision.

SEAL & SIGNATURE



Corner Name South Quarter Corner Section 1, T 13 N, R 66 W, 6th P.M. Cross-Index No.: E-23

County: Laramie Wyoming

SBRPEPLS/PLSW: March 1994; PLSW January 1998